

CASEMET GROUP  
Company brochure &  
Enclosure catalogue

# CASEMET

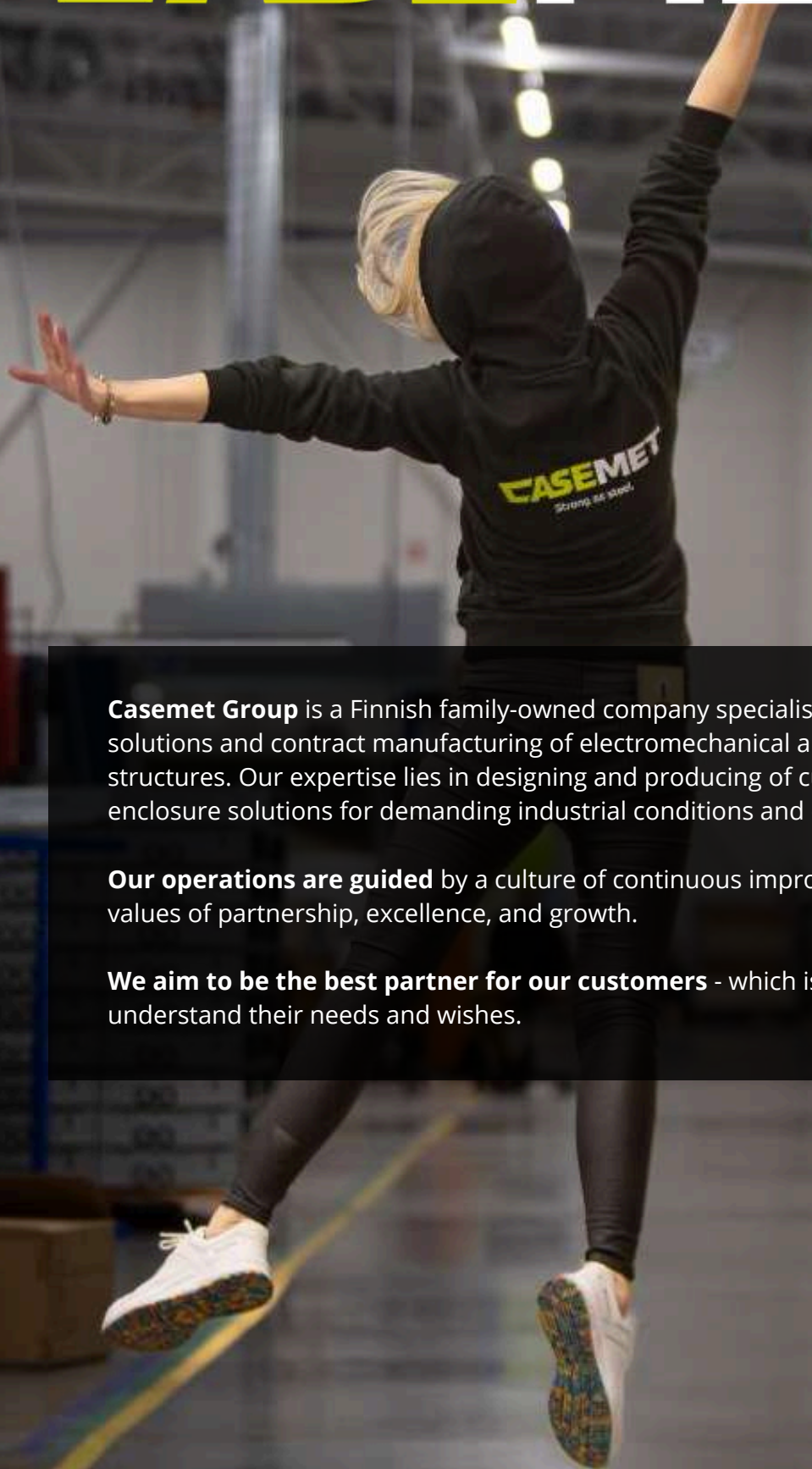
Strong as steel.



[casemet.fi](http://casemet.fi)



# CASEMET



**Casemet Group** is a Finnish family-owned company specialising in steel enclosure solutions and contract manufacturing of electromechanical and sheet metal structures. Our expertise lies in designing and producing of customer-specific enclosure solutions for demanding industrial conditions and environments.

**Our operations are guided** by a culture of continuous improvement and our core values of partnership, excellence, and growth.

**We aim to be the best partner for our customers** - which is why we listen to and understand their needs and wishes.

# Contents

Casemet Group

Products and Services

Contract manufacturing

Enclosure solutions

Selecting the enclosure and technical specifications

Casemet Cubo standard enclosure series

Casemet Cubo E

Casemet Cubo EO

Casemate Cubo F

Casemet Cubo U

Casemet Cubo V

Casemet Cubo OC

Casemet Cubo EC

General enclosure components



# Casemet Group

**Our factories are in Finland and Estonia.**

Mikkeli factory specialises in the production of metal enclosures and the contract manufacturing of electromechanical and sheet metal structures. Pärnu factory is focused on the contract manufacturing of mechanical components as a subcontractor for companies in the electronics and mechanical engineering sectors.

**The state-of-the-art machinery in our factories enables versatile and demanding metal processing.**

A stylized map of Finland and Estonia is shown in black and grey. Three red dots mark the locations of Casemet factories: Stockholm in Sweden, Helsinki in Finland, and Tallinn in Estonia. The Casemet logo, a yellow stylized 'C' with a dashed line, is placed near the Helsinki and Tallinn locations. To the right of the map, contact information for the Mikkeli and Pärnu factories is provided.

**Stockholm**

**Helsinki**

**Tallinn**

**CASEMET**  
**Mikkeli**  
**FINLAND**  
Insinöörinkatu 1, 50100 Mikkeli  
Customer service:  
+358 20 786 2630  
customer.service@casemet.fi

**CASEMET**  
**Pärnu**  
**ESTONIA**  
Turba 19, 80010 Pärnu  
Customer service:  
+372 44 20049  
info@casemet.ee

# OUR STORY OF GROWTH

Casemet's operations have consistently been driven by growth throughout its history. As a company, we have strategically enhanced our operations and expanded our capacity through both acquisitions and investments. Our growth and development stem from the values we have collaboratively established with our staff. These values serve as the foundation of all our activities.

**2025**

Casemet is being awarded as the regional company of the year. Automation and robotics are being strengthened in production through new machine investments. Publication of a sustainability report.

**2024**

Mikkeli factory is **expanded** by 1000 square metres. A New combination machine is introduced in Pärnu

**2022**

**Pärnu's new factory expands**, resulting in total of 4 500 square metres of production facilities. All operations in Pärnu are now under one roof.

**2023**

The introduction of the most significant **machine investment** in Casemet's history, a new automated production line over 30 m long at Casemet Mikkeli.

**2021**

Fimeca's business acquisition: Casemet Pärnu operates in **three** locations.

**2020**

Casemet Pärnu's **new factory** is completed.

**2018**

Larmek's **business acquisition**: Casemet Pärnu starts to operate.

**2016**

**Casemet Oy is established**, founded by the owners of Mikemet Oy: Casemet Oy acquires Ensto's metal enclosure solutions business.

**2017**

Casemet Oy and Mikemet Oy **merged**.

Partnership



Excellence



Growth





## CASEMET PÄRNU

- Turba 19, 80010 Pärnu
- 4 500 m<sup>2</sup>

# CASEMET FACTORIES

The extensive machinery in our factories enables:

- metal cutting (laser, punching)
- bending
- welding
- finishing
- powder coating
- sealing (polyurethane/silicone)
- screen printing
- mechanical and electromechanical assembly
- testing



## CASEMET MIKKELI

- Insinöörinkatu 1, 50100 Mikkelä
- 10 000 m<sup>2</sup>



# Products and Services

## ENCLOSURE SOLUTIONS

An extensive range of steel enclosures including both standard models and customised solutions, is tailored to meet specific customer requirements. Additionally, our products feature a wide variety of accessories such as mounting plates, rain covers, DIN rails, and cover plates. Our solutions are designed for demanding industrial environments where adequate protection and exceptional durability are essential.



## CONTRACT MANUFACTURING

Our product range includes contract manufacturing of both sheet metal structures and electromechanical assemblies. The strength of our contract manufacturing lies in over 40 years of experience in the fabrication and assembly of sheet metal components and electrical equipment. We pay close attention to our customers' wishes and needs. Our contract manufacturing provides extensive expertise and guidance in project implementation.

### Casemet design supports customer projects

The internal design team assists in creating enclosures and sheet metal parts, especially when standard enclosure solutions are customised or adapted to meet the customer's needs. Our designers possess extensive experience and expertise, working closely with clients. The design process considers project requirements such as operating conditions, materials and enclosure classifications (IK and IP ratings).

**“We have big ears.**

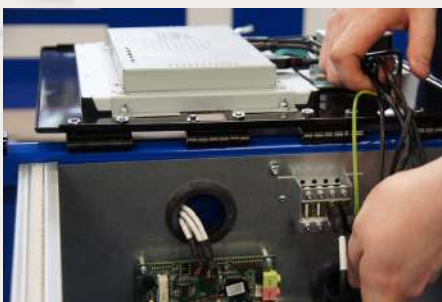
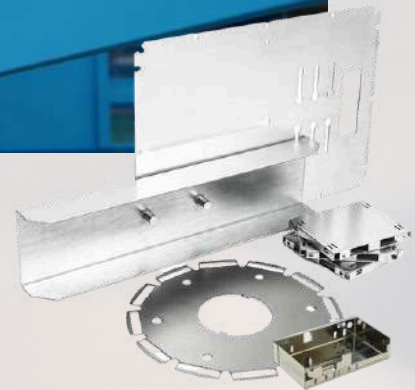
# Contract manufacturing

## CONTRACT MANUFACTURING OF SHEET METAL STRUCTURES AND PARTS

- Sheet metal components, products and structures

Our contract manufacturing of sheet metal structures includes designing sheet metal structures for demanding operating conditions (e.g. equipment frames) and producing high-quality precision mechanical parts.

Each project is carried out according to the customer's wishes and requirements. Our broad machine base, multiple material options, and experienced staff allow for versatile metalworking and the execution of challenging projects.



## ELECTROMECHANICAL CONTRACT MANUFACTURING

- Electromechanical assemblies

The electromechanical contract manufacturing process provides the customer with a comprehensive package, from the device frame to the electromechanical assembly. We produce the finished product while offering expert support and guidance for project execution. We collaborate closely with our customers on projects.

Explore further details regarding our contract manufacturing projects and references at: [www.casemet.fi/en/cases-by-casemet](http://www.casemet.fi/en/cases-by-casemet)

# Enclosure Solutions

## STANDARD ENCLOSURES AND CABINETS

Casemet's product range includes a variety of standard steel enclosures and cabinets in different sizes. The enclosures are designed for demanding industrial environments, and our extensive range of accessories allows our standard series to be customised to meet even the most specific requirements.



## CUSTOMISED ENCLOSURES AND CABINETS

We offer customer-specific, customised enclosure solutions. Customisation is based on our standard products, which are modified, for example, by:

- Machining (perforation and slotting, threading, corners and sheet metal bending)
- Printing (signs, stickers and various printing options)
- Finishing and painting (colour options and surface structures)
- Mechanical assemblies (housing)
- Customer-specific dimensions (precise sizes)



## TAILORED ENCLOSURES AND CABINETS

We also offer fully customised and unique enclosure solutions tailored to our customers' wishes and needs.



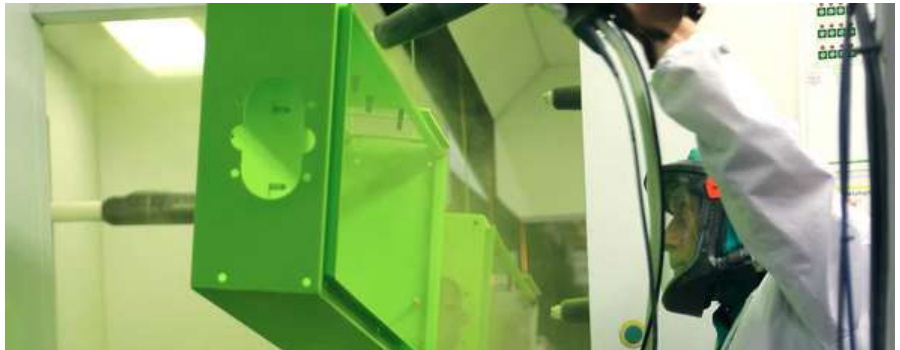
We design and test our products to be suitable for a broad range of applications and to withstand extreme conditions. Our Cubo E, EO, F, U, and OC enclosure series are certified to EN 62208:2011. The Cubo V series holds certification to IEC 60529. Additionally, the Cubo E and F enclosure series are certified to DNV-GL and UL 508A Industrial Control Panels.

# Customisation Services

Our standard enclosures can be customised to suit the unique needs and preferences of our customers. Our customisation services include:



Machining (cutting, drilling, punching, slotting, threading).



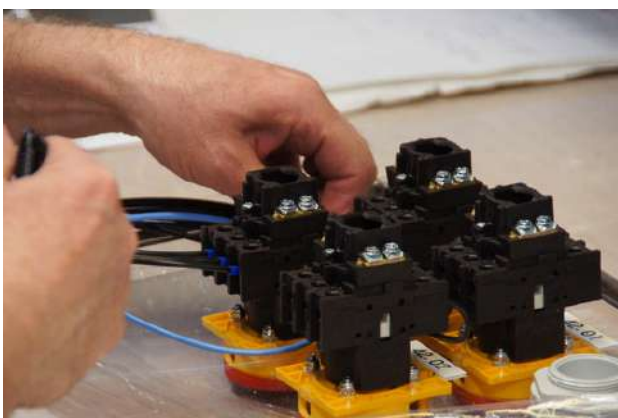
Finishing and powder painting.



Screen printing (printing on diverse materials, labels).



Mechanical assembly.



Electromechanical assembly.



Client-specific components.



Testing.



Custom sizes.

# Selecting an enclosure

When selecting an enclosure, it is important to understand the operating principles of the equipment to be installed and the conditions in which it will operate. This information allows for accurate identification of the necessary enclosure parameters.

## Parameters to consider include:

- Requirements and special conditions in the operating environment
- Material
- Dimensions
- Enclosure classification and impact resistance



## Material alternatives

### Steel

Steel enclosures demonstrate high impact resistance and meet classification standards. They can be easily customised to fit specific customer dimensions. The material thickness of our standard enclosures ranges from 1.25 to 1.5 millimetres, while Cubo OC materials range from 2.0 to 3.0 millimetres.

#### **Stainless steel, AISI 304**

Stainless steel, AISI304, is suitable for outdoor use (it is recommended to use a rain shelter) because it has excellent corrosion resistance and UV radiation resistance. This material is appropriate for demanding industrial settings, for example, in the food industry. The surface roughness of our stainless steel enclosures, AISI304, is Ra 0,20...0,35 micrometres.

#### **Stainless steel, AISI 316L**

Stainless steel AISI316L is used in environments requiring high resistance to corrosion or where standard stainless steel is not suitable, such as in the offshore industry. The surface roughness of our enclosures made of AISI316L is Ra 0,20...0,35 micrometres.

#### **Polyester painted mild steel**

The standard colour of our polyester-painted mild steel enclosures is grey (RAL 7035). The layer thickness ranges from 80 to 120 micrometres, and it does not contain TGIC (tri-glycidyl isocyanate).

#### **Galvanised steel with a polyester painting**

Galvanised, polyester-painted steel shares similar properties with polyester-painted steel but offers marginally better corrosion resistance. The standard colour of our galvanised, polyester-painted steel enclosures is grey (RAL 7035). The coating thickness ranges from 80 to 120 microns and does not contain TGIC (tri-glycidyl isocyanate).



## Aluminium

Using aluminium as the material for the enclosure solution provides excellent corrosion resistance. Aluminium is a suitable material when durability and lightness are needed from the housing.



## Material comparison

	Aluminium	Stainless steel AISI304	Stainless steel AISI316L	Painted mild steel	Galvanised steel
Outdoor use	****	*****	*****	***	****
Indoor use	*****	*****	*****	*****	*****
Light weight	****	*	*	*	*
High rigidity	****	*****	*****	*****	*****
Impact resistance	****	*****	*****	*****	*****
UV radiation resistance	*****	*****	*****	*****	*****
Temperature resistance range	****	****	****	****	****
Easiness to machine	**	*	*	**	**
Flammability	****	*****	*****	*****	*****
Resistance against solvents	*****	*****	*****	*	*
Resistance against petrol	*****	*****	*****	*	*
Resistance against hydraulic oil	*****	*****	*****	**	**
Resistance against alcohols	*****	*****	*****	**	**
Resistance against alkalis	*	*****	*****	*	*
Resistance against acids	*	****	*****	*	*

Excellent      \*\*\*\*\*  
 Good            \*\*\* and \*\*\*\*  
 Fair             \*\*  
 Poor            \*

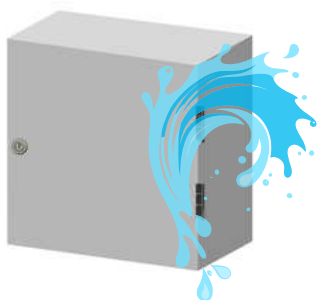
## Enclosure dimensions

The size of the enclosure is determined by the minimum and/or maximum dimensions of the application. When choosing the size, consider whether additional components may be added later and if so, whether the enclosure dimensions will still be suitable. Our standard enclosures come in various sizes, and we can also create solutions to meet the customer's desired dimensions.

# Degree of protection provided by an enclosure

The degree of protection of the enclosure depends on the IP and IK codes. This protection level is defined for an empty enclosure and must be maintained throughout installation and assembly. For example, the IP rating of cable glands should be equal to or higher than that of the enclosure.

## IP code (European standard EN 60529)



The IP code consists of the letters IP followed by two digits and an optional letter. The first digit indicates the level of protection against the intrusion of solid objects and dust. The second digit represents the level of protection against liquids. Casemet Cubo enclosures are designed for use in demanding environments. Their IP code ranges from IP 55 to IP 66/67/68/69. We have also developed customised solutions with an IP 69K rating. These applications are dust tight and capable of withstanding high pressure and steam cleaning.

## IK code (European standard EN 62262)

The IK code indicates the level of protection of the enclosures against external mechanical impacts. Our steel enclosures have an IK code of IK09 (Cubo OC has an IK code of IK10).

Cubo Cubo series	Cubo E	Cubo EO	Cubo F	Cubo V	Cubo U	Cubo OC
Material	PPMS, AISI 304, AISI 316L	PPMS	PPMS, AISI 304, AISI 316L	PPMS, AISI 304, AISI 316L	PPMS, AISI 304, AISI 316L	ALU, AISI304, AISI316L, GAL
SGS Fimko EN 62208	X	X	X		X	X
UL	X		X			
DNV-GL	X		X			
IEC 60529				X		

### MATERIALS:

PPMS = Polyester painted steel  
 AISI304= Stainless steel  
 AISI316L= Stainless steel  
 ALU=Aluminium  
 GAL= Galvanised steel

### CERTIFICATES:

UL = Underwriters Laboratories, File # E488993 (USA)  
 DNV GL = DNV GL rules for classification - Ships, offshore units and high speed and light crafts  
 IEC = International Electrotechnical Commission



## IP codes, EN 60529

### 1st numeral: Protection against intrusion



### 2nd numeral: protection against liquids



1. numeral		2. numeral	
0	No protection	0	No protection
1	Protection against objects $\geq 50$ mm	1	Protection against vertically falling water drops
2	Protection against objects $\geq 12$ mm	2	Protection against rain drops falling at max. 15° angle
3	Protection against objects $\geq 2,5$ mm	3	Protection against rain drops falling at max. 60° angle
4	Protection against solid objects $\geq 1$ mm	4	Protection against rain drops falling from all directions
5	Protection against dust, limited intrusion acceptable	5	Protection against low pressure sprue water from all directions
6	Total protection against dust	6	Protection against jet water under pressure
		7	Protection against water intrusion, submersion at 15 cm to 1 m depth, 0.5 hours
		8	Protection against water intrusion under long term submersion under pressure
		9	Protection against powerful high-temperature water jets

## IK code, EN 62262

### Protection from external mechanical impacts



IK Class	Impact energy (joules)
01-05	<1
06	1
07	2
08	5
09	10
10	20

# Casemet Cubo



## STANDARD ENCLOSURE SERIES

### Cover



Standard Casemet Cubo F terminal enclosures made of steel can be equipped with a polycarbonate window.

### Gasket



We use injected, jointless PUR (polyurethane) or silicone gaskets in our steel enclosures to ensure a high protection class.

The temperature resistance of various gasket materials is as follows:

**Polyurethane -40 – +80 °C**

**Silicone -50 – +150 °C**

### Mounting plates



Our mounting plates are made of galvanised steel. The material thickness of the plates varies between 1.5 and 3.0 millimetres, depending on the size of the plate.

We also manufacture mounting plates in customer-specific materials such as stainless steel or a non conductive materials. We customise mounting plates according to the customer's configurations, e.g. with threaded holes and cutouts. Mounting plates are included as standard in our Casemet Cubo E, EO, V, and U wall cabinets made of sheet steel.

## Hinges



Our range of standard Casemet Cubo enclosures includes hinged wall cabinets made of sheet steel. The position of the hinges can be easily switched from one side to the other in Casemet's Cubo E wall cabinets, even during the final installation phase. All our enclosures can be fitted with hinges, except Cubo V. Hinges are among our available enclosure accessories.

## Locking



The Casemet Cubo E and EO wall cabinets made of sheet steel come with locks as standard. Our selection of accessories includes various different lock options.

### Product packaging components

Casemet Cubo Series	Cubo E	Cubo EO	Cubo F	Cubo V	Cubo U	Cubo OC
Enclosure base	X	X	X	X	X	X
Door/Cover	X	X	X	X	X	X
Cover Screws			X	X	X	
Cover Plugs	X <sup>2</sup>		X <sup>2</sup>			
Mounting plate with required nuts	X	X		X	X	X
Cover plate(s) for flange opening(s), bolts and nuts	X <sup>**</sup>		X <sup>**</sup>			
Accessories for earth connection	X	X	X	X	X	X
Lock and key	X	X <sup>***</sup>			X <sup>3</sup>	X

- 2) Cover plugs for mounting holes (and hinge
- 3) holes) Models with locks

\*\* Flanged hole models only

\*\*\* Quarter-turn latch, no key

# TECHNICAL INFORMATION

## Enclosure Kit Specifications

Cubo case collection	Cube E	Try EO	Cube F	Cube V	U Cube	Cubo OC
<b>Materials</b>	PPMS, AISI304 AISI316L	PPMS	PPMS, AISI304 AISI316L	PPMS, AISI304 AISI316L	PPMS, AISI304 AISI316L	ALU, AISI 304, AISI 316L, GAL
Minimum size (mm)	200 x 300 x 150	190 x 240 x 138	150 x 150 x 80	80 x 80 x 80	150 x 150 x 90	600 x 1000 x 400
Maximum size (mm)	1000 x 1200 x 300	480 x 960 x 248	800 x 400 x 120	800 x 600 x 400	800 x 1000 x 300	1800 x 1800 x 600
Enclosure classification	IP 66	IP 66	IP 66	IP66, IP68, IP69	IP 66, IP 67	IP 65, IP 55
Impact resistance	IK 09 (-25 °C to +35 °C)	IK 09 (-25 °C to +35 °C)	IK 09 (-25 °C to +35 °C)	N/A	IK 09 (-25 °C to +35 °C)	IK 10 / (-25 °C to +35 °C)
Enclosure classification UL	NEMA 4, 4X, 12, 13 <sup>2</sup>	N/A	NEMA 4, 4X, 12, 13 <sup>3</sup>	N/A	N/A	N/A
Continuous operating temperature	-40°C ... +80°C	-40°C ... +80°C	-40°C ... +80°C	-55°C ... +85°C	-55°C ... +85°C	-55°C ... +85°C

### MATERIALS:

PPMS = polyester painted steel

GAL = galvanised steel

AISI 304 = stainless steel

AISI 316L = corrosion-resistant steel

N/A = data not available

<sup>1</sup> Double-door IP 55

<sup>2</sup> EFEP, ESSP, AESP enclosures

<sup>3</sup> FFUP, FSUP, FAUP enclosures

## NEMA classifications

### National Electrical Manufacturers Association

NEMA is a commercial organisation for electronic products in the United States. UL (Underwriters Laboratories) uses NEMA-defined standards and test methods to evaluate the enclosures and issued the UL certificate for them.

NEMA-class	Description
NEMA 1	Enclosures constructed for indoor to provide a degree of protection of the equipment inside the enclosure against ingress of solid foreign objects (falling dirt).
NEMA 12	Enclosures constructed for indoor to provide a degree of protection of the equipment inside the enclosure against ingress of solid foreign objects (falling dirt and circulating dust, lint, fibres and filings) and to provide a degree of protection with respect to harmful effects on the equipment due to the ingress of water (dripping and light splashing).
NEMA 13	Enclosures constructed for indoor to provide a degree of protection of the equipment inside the enclosure against ingress of solid foreign objects (falling dirt and circulating dust, lint, fibres and filings); to provide a degree of protection with respect to harmful effects on the equipment due to the ingress of water (dripping and light splashing); and to provide a degree of protection against the spraying, splashing and seepage of oil and non-corrosive coolants.
NEMA 3R	Enclosures constructed for outdoor to provide a degree of protection of the equipment inside the enclosure against ingress of solid foreign objects (falling dirt); to provide a degree of protection with respect to harmful effects on the equipment due to the ingress of water (rain, sleet, snow); and that will be undamaged by the external formation of ice on the enclosure.
NEMA 4	Enclosures constructed for indoor or outdoor to provide a degree of protection of the equipment inside the enclosure against ingress of solid foreign objects (falling dirt and windblown dust); to provide a degree of protection with respect to harmful effects on the equipment due to the ingress of water (rain, sleet, snow, splashing water, and hose directed water); and that will be undamaged by the external formation of ice on the enclosure.
NEMA 4X	Enclosures constructed for indoor or outdoor to provide a degree of protection with respect to harmful effects on the equipment due to the ingress of water (rain, sleet, snow, splashing water, and hose directed water); that provides an additional level of protection against corrosion; and that will be undamaged by the external formation of ice on the enclosure.

# Casemet Cubo E wall cabinets



## IP 66, models with two doors IP 55

Sizes 200 x 300 x 150 – 1000 x 1200 x 300 mm

- Polyester painted mild steel: Plain sides and models with flange openings
- Stainless steel AISI304: Plain sides
- Stainless steel AISI316L: Plain sides

### Cubo E Wall Cabinets: An Overview

- The models of polyester painted enclosures have flange openings, while stainless steel models have plain sides
- Available in 40 sizes
- Has welded M8 bolts for a mounting plate in the bottom of the base and M6 bolts for DIN rail profiles or DIN rails in the door
- Has M6 bolts for earthing on two sides of the base
- The door opens at an angle of 110 degrees.
- Door hinges can be easily switched from right to left.
- Polyester-coated enclosures feature wall mounting holes.
- Stainless steel models are equipped with pre-drilled holes.



### Product packaging contents

- Enclosure base and door
- Cover plate(s) for flange opening(s), bolts and nuts (polyester painted enclosures)
- Mounting plate with required nuts
- M8 bolt, washers and a nut for earth connection of the mounting plate
- Earth marks
- DIN 3 lock and one DIN 3 key
- Cover plugs for mounting holes (polyester painted enclosures) and hinge holes
- Nut and washers for M6 bolt



The enclosure has welded M8 bolts in the bottom of the base and M6 bolts in the door. There is also an M6 bolt for earthing on one side. EFLM4 fastening slug's mounting plate is an accessory. Ordered separately.



A rain shelter is recommended if the enclosure is used outdoors

### Compliance

Steel enclosures



### Technical information

Enclosure category: IP 66, models with two doors IP 55 IK 09 (-25 °C... +35 °C)

### Materials

Base/door:	Polyester painted mild steel, Stainless steel AISI304 Stainless steel AISI316L
Gasket:	PUR (polyurethane)
Mounting plate:	Galvanised steel
Locks:	In painted enclosures, zinc die-cast with chrome plating, AISI304 or AISI316L in stainless steel enclosures
Hinges:	Stainless steel

### Knockout alternatives

Polyester-painted enclosures: Plain sides, flange openings  
 AISI304: Plain sides  
 AISI316L: Plain sides

### Standard colour

Polyester-painted enclosures: Grey RAL 7035

# Casemet Cubo E -wall cabinets

Casemet Cubo E wall cabinets, flange openings, polyester painted mild steel

Product code	Description	External dimensions (mm)				Package size (pcs)
		Width	Height	Depth	Base depth	
EFEF203015A	1 B-flange opening	200	300	150	135	1
EFEF302015A	1 C-flange opening	300	200	150	135	1
EFEF303015A	1 C-flange opening	300	300	150	135	1
EFEF303020A	1 C-flange opening	300	300	200	185	1
EFEF304020A	1 C-flange opening	300	400	200	185	1
EFEF383820A	1 C-flange opening	380	380	200	185	1
EFEF386020A	1 C-flange opening	380	600	200	185	1
EFEF386030A	1 C-flange opening	380	600	500	285	1
EFEF403015A	1 C-flange opening	400	300	150	135	1
EFEF403020A	1 C-flange opening	400	300	200	185	1
EFEF404020A	1 C-flange opening	400	400	200	185	1
EFEF404030A	1 C-flange opening	400	400	300	285	1
EFEF405020A	1 C-flange opening	400	500	200	185	1
EFEF406020A	1 C-flange opening	400	600	200	185	1
EFEF406030A	1 C-flange opening	400	600	300	285	1
EFEF505020A	2 C-flange opening	500	500	200	185	1
EFEF505030A	2 C-flange opening	500	500	300	285	1
EFEF506030A	2 C-flange opening	500	600	300	285	1
EFEF604020A	2 C-flange opening	600	400	200	185	1
EFEF604030A	2 C-flange opening	600	400	300	285	1
EFEF606020A	2 C-flange opening	600	600	200	185	1
EFEF606030A	2 C-flange opening	600	600	300	285	1
EFEF608020A	2 C-flange opening	600	800	200	185	1
EFEF608030A	2 C-flange opening	600	800	300	285	1
EFEF6010030A	2 C-flange opening	600	1000	300	285	1
EFEF6012030A	2 C-flange opening	600	1200	300	285	1
EFEF767620A	3 C-flange opening	760	760	200	185	1
EFEF767630A	3 C-flange opening	760	760	300	285	1
EFEF806030A	3 C-flange opening	800	600	300	285	1
EFEF808020A	3 C-flange opening	800	800	200	185	1
EFEF808030A	3 C-flange opening	800	800	300	285	1
EFEF8010030A	3 C-flange opening	800	1000	300	285	1
EFEF8012030A	3 C-flange opening	800	1200	300	285	1
EFEF1008030A	4 C-flange opening	1000	800	300	285	1
EFEF10010030A	4 C-flange opening	1000	1000	300	285	1
EFEF10012030A	4 C-flange opening	1000	1200	300	285	1
EFEF808030DA	3 C-flange opening, two doors	800	800	300	285	1
EFEF8010030DA	3 C-flange opening, two doors	800	1000	300	285	1
EFEF10010030DA	4 C-flange opening, two doors	1000	1000	300	285	1
EFEF10012030DA	4 C-flange opening, two doors	1000	1200	300	285	1



EFEF203015A



EFEF6010030A



EFEF808030DA

### Casemet Cubo E wall cabinets, plain sides, polyester painted mild steel

Product code	Description	External dimensions (mm)			Package size (pcs)
		Width	Height	Depth	
EFEP203015A	Plain sides	200	300	150	1
EFEP302015A	Plain sides	300	200	150	1
EFEP303015A	Plain sides	300	300	150	1
EFEP303020A	Plain sides	300	300	200	1
EFEP304020A	Plain sides	300	400	200	1
EFEP383820A	Plain sides	380	380	200	1
EFEP386020A	Plain sides	380	600	200	1
EFEP386030A	Plain sides	380	600	300	1
EFEP403015A	Plain sides	400	300	150	1
EFEP403020A	Plain sides	400	300	200	1
EFEP404020A	Plain sides	400	400	200	1
EFEP404030A	Plain sides	400	400	300	1
EFEP405020A	Plain sides	400	500	200	1
EFEP406020A	Plain sides	400	600	200	1
EFEP406030A	Plain sides	400	600	300	1
EFEP505020A	Plain sides	500	500	200	1
EFEP505030A	Plain sides	500	500	300	1
EFEP50603 0A	Plain sides	500	600	300	1
EFEP604020A	Plain sides	600	400	200	1
EFEP604030A	Plain sides	600	400	300	1
EFEP606020A	Plain sides	600	600	200	1
EFEP606030A	Plain sides	600	600	300	1
EFEP608020A	Plain sides	600	800	200	1
EFEP608030A	Plain sides	600	800	300	1
EFEP6010030A	Plain sides	600	1000	300	1
EFEP6012030A	Plain sides	600	1200	300	1
EFEP767620A	Plain sides	760	760	200	1
EFEP767630A	Plain sides	760	760	300	1
EFEP806030A	Plain sides	800	600	300	1
EFEP808020A	Plain sides	800	800	200	1
EFEP808030A	Plain sides	800	800	300	1
EFEP8010030A	Plain sides	800	1000	300	1
EFEP8012030A	Plain sides	800	1200	300	1
EFEP1008030A	Plain sides	1000	800	300	1
EFEP10010030A	Plain sides	1000	1000	300	1
EFEP10012030A	Plain sides	1000	1200	300	1
EFEP808030DA	Plain sides	800	800	300	1
EFEP8010030DA	Plain sides	800	1000	300	1
EFEP10010030DA	Plain sides	1000	1000	300	1
EFEP10012030DA	Plain sides	1000	1200	300	1

### Casemet Cubo E wall cabinets, plain sides, stainless steel AISI304

Product code	Description	External dimensions (mm)				Package size (pcs)
		Width	Height	Depth	Base depth	
ESSP203015	Plain sides	200	300	150	135	1
ESSP302015	Plain sides	300	200	150	135	1
ESSP303015	Plain sides	300	300	150	135	1
ESSP303020	Plain sides	300	300	200	185	1
ESSP304020	Plain sides	300	400	200	185	1
ESSP383820	Plain sides	380	380	200	185	1
ESSP386020	Plain sides	380	600	200	185	1
ESSP386030	Plain sides	380	600	300	285	1
ESSP403015	Plain sides	400	300	150	135	1
ESSP403020	Plain sides	400	300	200	185	1
ESSP404020	Plain sides	400	400	200	185	1
ESSP404030	Plain sides	400	400	300	285	1
ESSP405020	Plain sides	400	500	200	185	1
ESSP406020	Plain sides	400	600	200	185	1
ESSP406030	Plain sides	400	600	300	285	1
ESSP505020	Plain sides	500	500	200	185	1
ESSP505030	Plain sides	500	500	300	285	1
ESSP506030	Plain sides	500	600	300	285	1



ESSP303015

Product code	Description	External dimensions (mm)				Package size (pcs)
		Width	Height	Depth	Base depth	
ESSP604020	Plain sides	600	400	200	185	1
ESSP604030	Plain sides	600	400	300	285	1
ESSP606020	Plain sides	600	600	200	185	1
ESSP606030	Plain sides	600	600	300	285	1
ESSP608020	Plain sides	600	800	200	185	1
ESSP608030	Plain sides	600	800	300	285	1
ESSP6010030	Plain sides	600	1000	300	285	1
ESSP6012030	Plain sides	600	1200	300	285	1
ESSP767620	Plain sides	760	760	200	185	1
ESSP767630	Plain sides	760	760	300	285	1
ESSP806030	Plain sides	800	600	300	285	1
ESSP808020	Plain sides	800	800	200	185	1
ESSP808030	Plain sides	800	800	300	285	1
ESSP8010030	Plain sides	800	1000	300	285	1
ESSP8012030	Plain sides	800	1200	300	285	1
ESSP1008030	Plain sides	1000	800	300	285	1
ESSP10010030	Plain sides	1000	1000	300	285	1
ESSP10012030	Plain sides	1000	1200	300	285	1

## Casemet Cubo E wall cabinets, plain sides, stainless steel AISI316L

Product code	Description	External dimensions (mm)				Package size (pcs)
		Width	Height	Depth	Base depth	
EASP203015	Plain sides	200	300	150	1	
EASP302015	Plain sides	300	300	150	1	
EASP303015	Plain sides	300	300	150	1	
EASP303020	Plain sides	300	300	200	1	
EASP304020	Plain sides	300	400	200	1	
EASP383820	Plain sides	380	380	200	1	
EASP386020	Plain sides	380	600	200	1	
EASP386030	Plain sides	380	600	300	1	
EASP403015	Plain sides	400	300	150	1	
EASP403020	Plain sides	400	400	200	1	
EASP404020	Plain sides	400	400	200	1	
EASP404030	Plain sides	400	500	300	1	
EASP405020	Plain sides	400	600	200	1	
EASP406020	Plain sides	400	600	200	1	
EASP406030	Plain sides	400	600	300	1	
EASP505020	Plain sides	500	500	200	1	
EASP505030	Plain sides	500	500	300	1	
EASP506030	Plain sides	500	600	300	1	
EASP604020	Plain sides	600	400	200	1	
EASP604030	Plain sides	600	400	300	1	
EASP606020	Plain sides	600	600	200	1	
EASP606030	Plain sides	600	600	300	1	
EASP608020	Plain sides	600	800	200	1	
EASP608030	Plain sides	600	800	300	1	
EASP6010030	Plain sides	600	1000	300	1	
EASP6012030	Plain sides	600	1200	300	1	
EASP767620	Plain sides	760	760	200	1	
EASP767630	Plain sides	760	760	300	1	
EASP806030	Plain sides	800	600	300	1	
EASP808020	Plain sides	800	800	200	1	
EASP808030	Plain sides	800	800	300	1	
EASP8010030	Plain sides	800	1000	300	1	
EASP8012030	Plain sides	800	1200	300	1	
EASP1008030	Plain sides	1000	800	300	1	
EASP10010030	Plain sides	1000	1000	300	1	
EASP10012030	Plain sides	1000	1200	300	1	



EASP303015

## Rain shelters

Product code	Description	Dimensions (mm)	Package size (pcs)
<b>PAINTED, RAL7035</b>			
ERS2015A	For size EFEF203015A	165 x 205	1
ERS3015A	For size EFEF30xx15A	165 x 305	1
ERS4015A	For size EFEF403015A	165 x 405	1
ERS3020A	For size EFEF30xx20A	220 x 305	1
ERS3820A	For size EFEF38xx20A	220 x 385	1
ERS3830A	For size EFEF38xx30A	320 x 385	1
ERS4020A	For size EFEF40xx20A	220 x 405	1
ERS5020A	For size EFEF505020A	220 x 505	1
ERS6020A	For size EFEF60xx20A	220 x 605	1
ERS8020A	For size EFEF808020A	220 x 805	1
ERS4030A	For size EFEF40xx30A	320 x 405	1
ERS5030A	For size EFEF50xx30A	320 x 505	1
ERS6030A	For size EFEF60xx30A	320 x 605	1
ERS7620A	For size EFEF76xx20A	220 x 765	1
ERS7630A	For size EFEF76xx30A	320 x 765	1
ERS8030A	For size EFEF80xx30A	320 x 805	1
ERS10030A	For size EFEF100xx30A	320 x 1005	1
<b>STAINLESS STEEL, AISI304</b>			
ERS2015B	For size ESSP203015	165 x 205	1
ERS3015B	For size ESSP30xx15	165 x 305	1
ERS3820B	For size ESSP38xx20	220 x 385	1
ERS3830B	For size ESSP38xx30	320 x 385	1
ERS4015B	For size ESSP403015	165 x 405	1
ERS3021B	For size ESSP30xx20	220 x 305	1
ERS4021B	For size ESSP40xx20	220 x 405	1
ERS5021B	For size ESSP505020	220 x 505	1
ERS6021B	For size ESSP60xx20	220 x 605	1
ERS8021B	For size ESSP808020	220 x 805	1
ERS4031B	For size ESSP40xx30	320 x 405	1
ERS5031B	For size ESSP50xx30	320 x 505	1
ERS6031B	For size ESSP60xx30	320 x 605	1
ERS7620B	For size ESSP76xx20	220 x 765	1
ERS7630B	For size ESSP76xx30	320 x 765	1
ERS8031B	For size ESSP80xx30	320 x 805	1
ERS10031B	For size ESSP100xx30	320 x 1005	1



ERS2015A



ERS2015B

## Mounting plates

Product code	Description	Dimensions (mm)	Package size (pcs)
<b>GALVANIZED STEEL</b>			
EMP23	200 x 300 mm enclosures	150 x 270 x 2	1
EMP32	300 x 200 mm enclosures	250 x 170 x 2	1
EMP33	300 x 300 mm enclosures	250 x 270 x 2	1
EMP3838	380 x 380 mm enclosures	350 x 330 x 2	1
EMP3860	380 x 600 mm enclosures	330 x 570 x 2	1
EMP34	300 x 400 mm enclosures	370 x 250 x 2	1
EMP43	400 x 300 mm enclosures	350 x 270 x 2	1
EMP44	400 x 400 mm enclosures	350 x 370 x 2	1
EMP45	400 x 500 mm enclosures	350 x 470 x 2,5	1
EMP46	400 x 600 mm enclosures	350 x 570 x 2,5	1
EMP55	500 x 500 mm enclosures	450 x 470 x 2,5	1
EMP56	500 x 600 mm enclosures	450 x 570 x 2,5	1
EMP64	600 x 400 mm enclosures	550 x 370 x 2,5	1
EMP66	600 x 600 mm enclosures	550 x 570 x 2,5	1
EMP68	600 x 800 mm enclosures	550 x 770 x 3	1
EMP610	600 x 1000 mm enclosures	550 x 970 x 3	1
EMP612	600 x 1200 mm enclosures	550 x 1170 x 3	1
EMP7676	760 x 760 mm enclosures	710 x 730 x 3	1
EMP86	800 x 600 mm enclosures	750 x 570 x 3	1
EMP88	800 x 800 mm enclosures	750 x 770 x 3	1
EMP810	800 x 1000 mm enclosures	750 x 970 x 3	1
EMP812	800 x 1200 mm enclosures	750 x 1170 x 3	1
EMP108	1000 x 800 mm enclosures	970 x 750 x 3	1
EMP1010	1000 x 1000 mm enclosures	950 x 970 x 3	1
EMP1012	1000 x 1200 mm enclosures	950 x 1170 x 3	1



EMP2 3

## DIN rails and DIN rail profiles

Product code and description	Dimensions (mm)	Package size (pcs)
<b>DIN rails for base, DIN 35, galvanised steel</b>		
DK3520B For base, 200 mm side, pair	35 x 122	10
DK3530B For base, 300 mm side, pair	35 x 222	10
DK3540B For base, 400 mm s side, pair	35 x 322	10
DK3550B For base, 500 mm side, pair	35 x 422	5
DK3560B For base, 600 mm s side, pair	35 x 522	5
DK3580B For base, 800 mm side, pair	35 x 722	5
DK35100 B For base,1000 mm side, pair	35 x 922	5
<b>DIN rail profiles for base, galvanised steel</b>		
EBP20 For base, 200 mm side, pair	20 x 143	1
EBP30 For base, 300 mm side, pair	20 x 243	1
EBP40 For base, 400 mm side, pair	20 x 343	1
EBP50 For base, 500 mm side, pair	20 x 443	1
EBP60 For base, 600 mm side, pair	20 x 543	1
EBP80 For base,800 mm side, pair	20 x 743	1
EBP100 For base, 1000 mm side, pair	20 x 943	1
EBP120 For base,1200 mm side, pair	20 x 1143	1
<b>DIN rails for door, DIN 35, galvanised steel</b>		
DK3520D For door, 200 mm side, pair	35 x 76	10
DK3530D For door,, 300 mm side, pair	35 x 176	10
DK3540D For door, 400 mm side, pair	35 x 276	10
DK3550D For door, 500 mm side, pair	35 x 376	5
DK3560D For door, 600 mm side, pair	35 x 476	5
DK3580D For door, 800 mm side, pair	35 x 676	5
DK35100D For door,1000 mm side, pair	35 x 876	5
<b>DIN rail profiles for door, galvanised steel</b>		
EDP20 For door,, 200 mm side, pair	15 x 133	1
EDP30 For door, 300 mm side, pair	15 x 233	1
EDP40 For door, 400 mm side, pair	15 x 333	1
EDP50 For door,500 mm side, pair	15 x 433	1
EDP60 For door, 600 mm side, pair	15 x 533	1
EDP80 For door, 800 mm side, pair	15 x 733	1
EDP100 For door, 1000 mm side, pair	15 x 933	1
EDP120 For door, 1200 mm side, pair	15 x 1133	1



DIN rail profiles for base, EBP20



DIN rail profiles for door, EBP20

## Cover plates and flanges

Product code	Description	Dimensions (mm)	Package size (pcs)
EVF2A	Ventilation flange, size C	93 x 222 x 7.5	1
ECF1A	Cover plate, size B	48 x 137 x 7.5	1
ECF2A	Cover plate, size C	93 x 222 x 7.5	1



Ventilation flange, size C

Other accessories

Product code	Description	Dimensions (mm)	Package size (pcs)
ED10	Triangular lock with 11 mm key	ø 28 x 32 x ø 22	1
ED10M6	Lock with wing handle, width 50 mm	50 x 45 x ø 22	1
EKL1	Lock incl. 2 keys	ø 27 x 33 x ø 22	1
EH1	Black swing handle for three point locking	48 x 180 x 50	1
EDS2	Door stopper, set, galvanized steel	-	1
EG200	Door grounding, M6>M6, 2,5 mm <sup>2</sup>	Pituus 220 mm	1
EFLM4	Counterpart for fastening lugs, set of 4 pcs	-	1
OLT42KEY	DIN 3 key for standard lock	50 x 53 x ø22	1
VPTS95	Door stopper	255 x 40 x 35	1
EO7 1.40	Adapter for padlock	50 x 45 x 35	1
EFFL3.20	Fastening lugs, 20 mm high, set of 4 pcs, galvanized steel	45 x 60 x 25	1
EFFL3.22	Fastening lugs, 20 mm high, set of 4 pcs, AISI 316L	45 x 60 x 25	1
VPTL100	Lock with solid T-handle, padlock	50 x 48 x ø22	1
VPTL116	T-handle, not lockable	78 x 65 x ø22	1
VPTL198	Black swing handle for three point locking, 2 keys	165 x 36 x 42	1
VPTL196	Hygiene lock, IP66, material AISI 316L	ø28 x 41 x ø22	1
VPTL197	Hygiene lock key	50 x 53 x ø18	1



Triangular lock with 11 mm key, ED10.



Lock with wing handle, ED10M6.



Lock incl. 2 keys, EKL1.



Black swing handle for three point locking, EH1.



Door stopper, set, EDS2.



Door grounding, EG200.



Counterpart for fastening lugs, EFLM4.



DIN 3 key for standard lock, OLT42KEY.



Adapter for padlock, EO71.04



EFFL3.22 Fastening lugs, 20 mm high, set of 4 pcs, galvanized steel EFFL3.20.



VPTL100 Lock with solid T-handle, padlock, VPTL100.



T-handle, not lockable VPTL116.



Hygiene lock VPTL196 and a key VPTL197.



Black swing handle for three point locking and 2 keys VPT198.

# Casemet Cubo EO wall cabinets

## IP 66

Sizes 190 x 240 x 138 –  
480 x 960 x 248 mm

- Polyester painted mild steel: flange knockouts



### Casemet Cubo EO wall cabinets in brief:

- Has flange knockouts on each side of the base .
- Available in 22 sizes .
- Door fitted with a quarter-turn slotted fastener .
- The door opens at an angle of 110 degrees.
- Features fixed M8 inserts for mounting a plate at the base's bottom.
- Has M6 bolt for earthing on one side of the base and two M6 bolts in the door, for earthing.
- An excellent choice for creating larger assemblies.

### Contents of the product package:

- Enclosure base
- Door
- M8 mounting screws and earthing accessories
- Slotted lock



The enclosures include flange knockouts on all four sides.

#### Compliance

Steel enclosures



#### Technical information

Degree of protection:

IP 66

Impact resistance:

IK 09 (-25 °C to +35 °C)

#### Material

Base/door:

Polyester painted mild steel

Gasket:

PUR (polyurethane)

Mounting plate:

Galvanised steel

#### Knockout alternatives

Polyester painted mild steel cabinets:

Flange knockouts

#### Standard colour

Polyester painted mild steel cabinets:

Grey RAL 7035

# Casemet Cubo EO wall cabinets

Casemet Cubo EO wall cabinets, flange knockouts, polyester painted mild steel

Product code	Description	External dimensions (mm)				Package size (pcs)
		Width	Height	Depth	Base depth	
EOK192414A	4 B-flange knockout	190	240	138	123	1
EOJ192814A	2 B-flange knockout + 2 C-flange knockouts	190	280	138	123	1
EOJ192819A	2 B-flange knockout + 2 C-flange knockouts	190	280	193	178	1
EOM193814A	2 B-flange knockout + 2 C-flange knockouts	190	380	138	123	1
EOM193819A	2 B-flange knockout + 2 C-flange knockouts	190	380	193	178	1
EOL242814A	2 B-flange knockout + 2 C-flange knockouts	240	280	138	123	1
EOO282814A	4 C-flange knockouts	280	280	138	123	1
EOO282819A	4 C-flange knockouts	280	280	193	178	1
EOP283814A	4 C-flange knockouts	280	380	138	123	1
EOP283819A	4 C-flange knockouts	280	380	193	178	1
EOT285614A	6 C-flange knockouts	280	560	138	123	1
EOT285619A	6 C-flange knockouts	280	560	193	178	1
EOR383814A	4 C-flange knockouts	380	380	138	123	1
EOR383819A	4 C-flange knockouts	380	380	193	178	1
EOU385614A	6 C-flange knockouts	380	560	138	123	1
EOU385619A	6 C-flange knockouts	380	560	193	178	1
EOU385625A	6 C-flange knockouts	380	560	248	233	1
EOV388419A	8 C-flange knockouts	380	840	193	178	1
EOV388425A	8 C-flange knockouts	380	840	248	233	1
EOY484825A	4 C-flange knockouts	480	480	248	233	1
EOZ487625A	6 C-flange knockouts	480	760	248	233	1
EOQ489625A	6 C-flange knockouts	480	960	248	233	1

## Mounting plates, galvanized steel

Product code	Description	Dimensions (mm)	Package size (pcs)
EOK1	190 x 240 mm enclosures	140 x 190 x 1.5	1
EOJ1	190 x 280 mm enclosures	140 x 230 x 1.5	1
EOM1	190 x 380 mm enclosures	140 x 330 x 1.5	1
EOL1	240 x 280 mm enclosures	190 x 230 x 1.5	1
EOO1	280 x 280 mm enclosures	230 x 230 x 1.5	1
EOP1	280 x 380 mm enclosures	230 x 330 x 1.5	1
EOT1	280 x 560 mm enclosures	230 x 510 x 1.5	1
EOR1	380 x 380 mm enclosures	330 x 330 x 1.5	1
EOU1	380 x 560 mm enclosures	330 x 510 x 1.5	1
EOU3	380 x 560 mm enclosures	330 x 510 x 2.5	1
EOV1	380 x 840 mm enclosures	330 x 790 x 1.5	1
EOV3	380 x 840 mm enclosures	330 x 790 x 2.5	1
EOY1	480 x 480 mm enclosures	430 x 430 x 1.5	1
EOZ1	480 x 760 mm enclosures	430 x 710 x 1.5	1
EOZ3	480 x 760 mm enclosures	430 x 710 x 2.5	1
EOQ1	480 x 960 mm enclosures	430 x 910 x 1.5	1
EOQ3	480 x 960 mm enclosures	430 x 910 x 2.5	1



EOJ192814A



EOR383814A



EOJ1

## Other fittings

Product code	Description	Dimensions (mm)	Package size (pcs)
<b>Lock alternatives</b>			
EO71.04	Adapter for padlock	-	1
EO71.05	Adapter for padlock incl. T handle	-	1
EO71.06	DIN 3 lock	DIN 3	1
EO71.07	T handle lock	10/M5	1
OLT42KEY	Key for DIN 3 lock	50 x 53 x ø22	1
<b>Flange accessories</b>			
EO72.07	Fastening bolt set, size B	M6	1
EO72.08	Fastening bolt set, size C	M8	1
EO72.10	Counter rib M6 for B size flange	M6	1
EO72.11	Counter rib M8 for C size flange	M8	1
<b>Mounting lugs</b>			
EOFL2.20	Fastening lugs, set of 4 pcs, 20 mm high	20	1
EOFL2.50	Fastening lugs, set of 4 pcs, 50 mm high	50	1
<b>Other supplies</b>			
EVF2A	Ventilation flange, size C	93 x 222 x 7.5	1
EDS2	Door stopper, set, stainless steel	-	1



Adapter for padlock, EO71.04.



Adapter for padlock incl. T handle, EO71.05.



DIN 3 lock, EO71.06



T handle lock, EO71.07.



Key for DIN 3 lock, OLT42KEY.



Fastening bolt set, size B, EO72.07.



Counter rib M6 for B size flange, EO72.10.



Fastening lug set, 20 mm high, EOFL2.20.



Ventilation flange, size C, EVF2A.



Door stopper, set, EDS2.

# Casemet Cubo F terminal enclosures



## IP 66

### Sizes 150 x 150 x 80 – 800 x 400 x 120 mm

- Polyester painted mild steel: plain sides and flange openings
- Stainless steel AISI 304: plain sides
- Stainless steel AISI 316L: plain sides

### Cubo F terminal enclosure in brief

- Has plain sides.
- 120 mm deep polyester painted enclosures are also available with flange openings or a polycarbonate window as standard.
- Available in 30 sizes and in two base depth alternatives.
- Small push button enclosures also available in four sizes.
- Include a perforated support for DIN rail or mounting plate enabling the maximum use of all sides of the enclosure for cable entries.
- Has M6 bolt for earthing on one side of the base.
- Available in AISI 316 stainless steel.
- All versions can be supplied with hinges.
- Polyester painted enclosures with wall mounting holes.
- Stainless and acid-proof steel versions have drill marks ready.



These enclosures feature a perforated support for a DIN rail or mounting plate as standard. The optimised mounting supports allow maximum use of all sides of the enclosure for cable entries.

### Product packaging contents

- Enclosure base
- Cover
- Cover screws with gasket and cage nuts.
- Cover plugs for mounting holes
- An M6 nut and a washer for earthing
- Earth marks
- Models with flange openings also include cover plates, bolts and washers



120 mm deep polyester painted enclosures are also available with flange openings. The product package includes cover plates, bolts and washers.

### Compliance

Steel enclosures



### Technical information

Degree of protection:	IP 66, models with two cover screws IP 55
Impact resistance:	IK 09 (-25 °C to +35 °C), models with window IK 07 (-5 °C to +80 °C)

### Materials

Base/door:	Polyester painted mild steel, stainless steel AISI304 or acid-proof steel AISI316L
Gasket:	PUR (polyurethane)
Cover screw gasket:	Dryflex (SEBS)

### Knockout alternatives

Polyester-coated enclosures:	Plain sides, flange openings
AISI304:	Plain sides
AISI316L:	Plain sides

### Standard colour

Polyester-painted enclosures: Grey RAL 7035

# Case Casemet Cubo F terminal enclosures

## Casemet Cubo F terminal enclosures, plain sides, polyester painted mild steel

Product code	Description	External dimensions (mm)				Package size (pcs)
		Width	Height	Depth	Base depth	
FFUP151508A	Plain sides	150	150	80	65	1
FFUP202008A	Plain sides	200	200	80	65	1
FFUP301508A	Plain sides	300	150	80	65	1
FFUP302008A	Plain sides	300	200	80	65	1
FFUP303008A	Plain sides	300	300	80	65	1
FFUP402008A	Plain sides	400	200	80	65	1
FFUP403008A	Plain sides	400	300	80	65	1
FFUP404008A	Plain sides	400	400	80	65	1
FFUP502008A	Plain sides	500	200	80	65	1
FFUP503008A	Plain sides	500	300	80	65	1
FFUP602008A	Plain sides	600	200	80	65	1
FFUP603008A	Plain sides	600	300	80	65	1
FFUP604008A	Plain sides	600	400	80	65	1
FFUP802008A	Plain sides	800	200	80	65	1
FFUP804008A	Plain sides	800	400	80	65	1
FFUP151512A	Plain sides	150	150	120	105	1
FFUP202012A	Plain sides	200	200	120	105	1
FFUP301512A	Plain sides	300	150	120	105	1
FFUP302012A	Plain sides	300	200	120	105	1
FFUP303012A	Plain sides	300	300	120	105	1
FFUP402012A	Plain sides	400	200	120	105	1
FFUP403012A	Plain sides	400	300	120	105	1
FFUP404012A	Plain sides	400	400	120	105	1
FFUP502012A	Plain sides	500	200	120	105	1
FFUP503012A	Plain sides	500	300	120	105	1
FFUP602012A	Plain sides	600	200	120	105	1
FFUP603012A	Plain sides	600	300	120	105	1
FFUP604012A	Plain sides	600	400	120	105	1
FFUP802012A	Plain sides	800	200	120	105	1
FFUP804012A	Plain sides	800	400	120	105	1



FFUP151508



FFUP403012A

## Casemet Cubo F terminal enclosures, plain sides, stainless steel AISI304

Product code	Description	External dimensions (mm)				Package size (pcs)
		Width	Height	Depth	Base depth	
FSUP151508	Plain sides	150	150	80	65	1
FSUP202008	Plain sides	200	200	80	65	1
FSUP301508	Plain sides	300	150	80	65	1
FSUP302008	Plain sides	300	200	80	65	1
FSUP303008	Plain sides	300	300	80	65	1
FSUP402008	Plain sides	400	200	80	65	1
FSUP403008	Plain sides	400	300	80	65	1
FSUP404008	Plain sides	400	400	80	65	1
FSUP502008	Plain sides	500	200	80	65	1
FSUP503008	Plain sides	500	300	80	65	1
FSUP602008	Plain sides	600	200	80	65	1
FSUP603008	Plain sides	600	300	80	65	1
FSUP604008	Plain sides	600	400	80	65	1
FSUP802008	Plain sides	800	200	80	65	1
FSUP804008	Plain sides	800	400	80	65	1
FSUP151512	Plain sides	150	150	120	105	1
FSUP202012	Plain sides	200	200	120	105	1
FSUP301512	Plain sides	300	150	120	105	1
FSUP302012	Plain sides	300	200	120	105	1
FSUP303012	Plain sides	300	300	120	105	1
FSUP402012	Plain sides	400	200	120	105	1
FSUP403012	Plain sides	400	300	120	105	1
FSUP404012	Plain sides	400	400	120	105	1
FSUP502012	Plain sides	500	200	120	105	1
FSUP503012	Plain sides	500	300	120	105	1
FSUP602012	Plain sides	600	200	120	105	1
FSUP603012	Plain sides	600	300	120	105	1
FSUP604012	Plain sides	600	400	120	105	1
FSUP802012	Plain sides	800	200	120	105	1
FSUP804012	Plain sides	800	400	120	105	1



FSUP151508



FSUP403012

Casemet Cubo F terminal enclosures, plain sides, stainless steel AISI316L

Product code	Description	External dimensions (mm)				Package size (pcs)
		Width	Height	Depth	Base depth	
FAUP151508	Plain sides	150	150	80	65	1
FAUP202008	Plain sides	200	200	80	65	1
FAUP301508	Plain sides	300	150	80	65	1
FAUP302008	Plain sides	300	200	80	65	1
FAUP303008	Plain sides	300	300	80	65	1
FAUP402008	Plain sides	400	200	80	65	1
FAUP403008	Plain sides	400	300	80	65	1
FAUP404008	Plain sides	400	400	80	65	1
FAUP502008	Plain sides	500	200	80	65	1
FAUP503008	Plain sides	500	300	80	65	1
FAUP602008	Plain sides	600	200	80	65	1
FAUP603008	Plain sides	600	300	80	65	1
FAUP604008	Plain sides	600	400	80	65	1
FAUP802008	Plain sides	800	200	80	65	1
FAUP804008	Plain sides	800	400	80	65	1
FAUP151512	Plain sides	150	150	120	105	1
FAUP202012	Plain sides	200	200	120	105	1
FAUP301512	Plain sides	300	150	120	105	1
FAUP302012	Plain sides	300	200	120	105	1
FAUP303012	Plain sides	300	300	120	105	1
FAUP402012	Plain sides	400	200	120	105	1
FAUP403012	Plain sides	400	300	120	105	1
FAUP404012	Plain sides	400	400	120	105	1
FAUP502012	Plain sides	500	200	120	105	1
FAUP503012	Plain sides	500	300	120	105	1
FAUP602012	Plain sides	600	200	120	105	1
FAUP603012	Plain sides	600	300	120	105	1
FAUP604012	Plain sides	600	400	120	105	1
FAUP802012	Plain sides	800	200	120	105	1
FAUP804012	Plain sides	800	400	120	105	1



FAUP151508



FAUP403012

Casemet Cubo F terminal enclosures, flange openings, polyester painted mild steel

Flange opening size: 192 x 62 mm

Product code	Description	External dimensions (mm)				Package size (pcs)
		Width	Height	Depth	Base depth	
FFUF301512A	Flanges/side 1 + 1 + 0 + 0	300	150	120	105	1
FFUF302012A	Flanges/side 1 + 1 + 0 + 0	300	200	120	105	1
FFUF303012A	Flanges/side 1 + 1 + 1 + 1	300	300	120	105	1
FFUF402012A	Flanges/side 1 + 1 + 0 + 0	400	200	120	105	1
FFUF403012A	Flanges/side 1 + 1 + 1 + 1	400	300	120	105	1
FFUF404012A	Flanges/side 1 + 1 + 1 + 1	400	400	120	105	1
FFUF502012A	Flanges/side 2 + 2 + 0 + 0	500	200	120	105	1
FFUF503012A	Flanges/side 2 + 2 + 1 + 1	500	300	120	105	1
FFUF602012A	Flanges/side 2 + 2 + 0 + 0	600	200	120	105	1
FFUF603012A	Flanges/side 2 + 2 + 1 + 1	600	300	120	105	1
FFUF604012A	Flanges/side 2 + 2 + 1 + 1	600	400	120	105	1
FFUF802012A	Flanges/side 3 + 3 + 0 + 0	800	200	120	105	1
FFUF804012A	Flanges/side 3 + 3 + 1 + 1	800	400	120	105	1



FFUF303012A

Casemet Cubo F terminal enclosures, polycarbonate window, polyester painted mild steel

Product code	Description	External dimensions (mm)				Package size (pcs)
		Width	Height	Depth	Base depth	
FFUW202012A	Window size: 120 x 120 mm	200	200	120	105	1
FFUW302012A	Window size: 220 x 120 mm	300	200	120	105	1
FFUW402012A	Window size: 320 x 120 mm	400	200	120	105	1
FFUW502012A	Window size: 420 x 120 mm	500	200	120	105	1
FFUW602012A	Window size: 520 x 120 mm	600	200	120	105	1
FFUW802012A	Window size: 720 x 120 mm	800	200	120	105	1



FFUW302012A

## Casemet Cubo F enclosures with push button openings, stainless steel AISI304

Components installed in prefabricated openings can decrease the final degree of protection.

Product code	Description	External dimensions (mm)				Package size (pcs)
		Width	Height	Depth	Base depth	
FSPB101009	1 push button opening	100	100	90	75	1
FSPB161009	2 push button openings	160	100	90	75	1
FSPB221009	3 push button openings	220	100	90	75	1
FSPB281009	4 push button openings	280	100	90	75	1

## Mounting plates and DIN rails

Product code	Description	Dimensions (mm)	Package size (pcs)
<b>Mounting plates, galvanised steel</b>			
FMP1515	150 x 150 mm enclosures	135 x 100 x 2	10
FMP2020	200 x 200 mm enclosures	185 x 150 x 2	10
FMP3015	300 x 150 mm enclosures	285 x 100 x 2	10
FMP3020	300 x 200 mm enclosures	285 x 150 x 2	10
FMP3030	300 x 300 mm enclosures	285 x 250 x 2	10
FMP4020	400 x 200 mm enclosures	385 x 150 x 2	10
FMP4030	400 x 300 mm enclosures	385 x 250 x 2	5
FMP4040	400 x 400 mm enclosures	385 x 350 x 2	5
FMP5020	500 x 200 mm enclosures	485 x 150 x 2	5
FMP5030	500 x 300 mm enclosures	485 x 250 x 2	5
FMP6020	600 x 200 mm enclosures	585 x 150 x 2	5
FMP6030	600 x 300 mm enclosures	585 x 250 x 2	5
FMP6040	600 x 400 mm enclosures	585 x 350 x 2	5
FMP8020	800 x 200 mm enclosures	785 x 150 x 2	5
FMP8040	800 x 400 mm enclosures	785 x 350 x 2	5
<b>DIN rails, galvanised steel</b>			
DK3515	150 mm side	35 x 140	10
DK3520	200 mm side	35 x 190	10
DK3530	300 mm side	35 x 290	10
DK3540	400 mm side	35 x 390	10
DK3550	500 mm side	35 x 490	5
DK3560	600 mm side	35 x 590	5
DK3580	800 mm side	35 x 790	5



FMP1515

## Other accessories

Product code	Description	Dimensions (mm)	Package size (pcs)
FFUF1A	Cover plate	84 x 214 x 2	1
FHI2	Hinge pair, stainless steel	30 x 15 x 11	1
FFL1	Fastening lugs, 10 mm high, set of 4 pcs	depth 10 mm	1
FFL2	Fastening lugs, 10 mm high, set of 4 pcs	depth 10 mm	1
EFFL2.50	Fastening lugs, 50 mm high, set of 4 pcs	depth 50 mm	1
EFFL3.20	Fastening lugs, 20 mm high, set of 4 pcs, galvanized steel	depth 20 mm	1
EFFL3.22	Fastening lugs, 20 mm high, set of 4 pcs, AISI 316L	depth 20 mm	1



Cover plate, FFUF1A.



Hinge pair, FHI2.



Fastening lug set, 20 mm high, EFFL3.20

# Casemet Cubo U wall cabinets

**IP 66, IP 67**

**Sizes 150 x 150 x 90 – 800 x 1000 x 300 mm**

- Polyester painted mild steel: plain sides
- Stainless steel AISI 304: plain sides
- Stainless steel AISI 316L: plain sides



## Cubo U -wall cabinets in brief

- High-quality enclosures are dust-tight and durable to immersion.
- The Cubo series enclosures are available in stainless steel and polyester painted steel.
- Enclosures have a high-quality seamless silicone gasket.
- Cover screw or latch + hinged.
- The Base and cover include welding bolts.
- Mounting plate with required nuts.
- High heat resistance.
- The door can be opened 210 °.
- External fastening lugs, easy to install.



Cubo U is a good choice for demanding environments. The enclosure is dustproof and resistant to immersion.

## Contents of the product package:

- Base of the enclosures
- Cover
- Cover screws (screw-secured cover)
- Mounting plate
- M6 nut and washer for grounding
- Grounding indicators
- DIN 3 lock and a single DIN 3 key (lockable lid)



Cubo U has external mounting ears, making the enclosure easy to install.

Compliance	
Steel enclosures	CE RoHS (F) UK CA
Technical information	
Degree of protection:	IP 66, IP 67
Impact resistance:	IK 09
Material	
Base/door	Polyester painted mild steel, stainless steel AISI304, stainless steel AISI316L
Gasket:	Silicone
Mounting plate	Galvanised steel
Door fastening:	Screws or hinges + latch
Knockout alternatives	
Polyester painted enclosures:	Plain sides
AISI304:	Plain sides
AISI316L:	Plain sides
Standard colour	
Polyester painted enclosures:	Grey RAL 7035

# Casemet Cubo U enclosures

## Casemet Cubo U -enclosures, screw-on cover, polyester painted mild steel

Product code	Description	External dimensions (mm)				Package size (pcs)
		Width	Height	Depth	Base depth	
UFUP151509	Plain sides	150	150	90	61	1
UFUP152010	Plain sides	150	200	100	71	1
UFUP202010	Plain sides	200	200	100	71	1
UFUP203012	Plain sides	200	300	120	91	1
UFUP204015	Plain sides	200	400	150	121	1
UFUP303015	Plain sides	300	300	150	121	1
UFUP403015	Plain sides	400	300	150	121	1
UFUP404020	Plain sides	400	400	200	171	1
UFUP406020	Plain sides	400	600	200	171	1
UFUP508020	Plain sides	500	800	200	171	1

## Casemet Cubo U -enclosures, screw-on cover, stainless steel AISI304

Product code	Description	External dimensions (mm)				Package size (pcs)
		Width	Height	Depth	Base depth	
USUP151509	Plain sides	150	150	90	61	1
USUP152010	Plain sides	150	200	100	71	1
USUP202010	Plain sides	200	200	100	71	1
USUP203012	Plain sides	200	300	120	91	1
USUP204015	Plain sides	200	400	150	121	1
USUP303015	Plain sides	300	300	150	121	1
USUP403015	Plain sides	400	300	150	121	1
USUP404020	Plain sides	400	400	200	171	1
USUP406020	Plain sides	400	600	200	171	1
USUP508020	Plain sides	500	800	200	171	1

## Casemet Cubo U -enclosures, screw-on cover, stainless steel AISI316L

Product code	Description	External dimensions (mm)				Package size (pcs)
		Width	Height	Depth	Base depth	
UAUP151509	Plain sides	150	150	90	61	1
UAUP152010	Plain sides	150	200	100	71	1
UAUP202010	Plain sides	200	200	100	71	1
UAUP203012	Plain sides	200	300	120	91	1
UAUP204015	Plain sides	200	400	150	121	1
UAUP303015	Plain sides	300	300	150	121	1
UAUP403015	Plain sides	400	300	150	121	1
UAUP404020	Plain sides	400	400	200	171	1
UAUP406020	Plain sides	400	600	200	171	1
UAUP508020	Plain sides	500	800	200	171	1



### Casemet Cubo U -enclosure, latch cover, polyester painted mild steel

Product code	Description	External dimensions (mm)				Package size (pcs)
		Width	Height	Depth	Base depth	
UFEP203016	Plain sides	200	300	160	131	1
UFEP303016	Plain sides	300	300	160	131	1
UFEP304016	Plain sides	300	400	160	131	1
UFEP304020	Plain sides	300	400	200	171	1
UFEP404016	Plain sides	400	400	160	131	1
UFEP404020	Plain sides	400	400	200	171	1
UFEP406020	Plain sides	400	600	200	171	1
UFEP506030	Plain sides	500	600	300	271	1
UFEP608030	Plain sides	600	800	300	271	1
UFEP8010030	Plain sides	800	1000	300	271	1

### Casemet Cubo U -enclosure, latch cover, stainless steel AISI304

Product code	Description	External dimensions (mm)				Package size (pcs)
		Width	Height	Depth	Base depth	
USSP203016	Plain sides	200	300	160	131	1
USSP303016	Plain sides	300	300	160	131	1
USSP304016	Plain sides	300	400	160	131	1
USSP304020	Plain sides	300	400	200	171	1
USSP404016	Plain sides	400	400	160	131	1
USSP404020	Plain sides	400	400	200	171	1
USSP406020	Plain sides	400	600	200	171	1
USSP506030	Plain sides	500	600	300	271	1
USSP608030	Plain sides	600	800	300	271	1
USSP8010030	Plain sides	800	1000	300	271	1

### Casemet Cubo U -enclosure, latch cover, stainless steel AISI316L

Product code	Description	External dimensions (mm)				Package size (pcs)
		Width	Height	Depth	Base depth	
UASP203016	Plain sides	200	300	160	131	1
UASP303016	Plain sides	300	300	160	131	1
UASP304016	Plain sides	300	400	160	131	1
UASP304020	Plain sides	300	400	200	171	1
UASP404016	Plain sides	400	400	160	131	1
UASP404020	Plain sides	400	400	200	171	1
UASP406020	Plain sides	400	600	200	171	1
UASP506020	Plain sides	500	600	300	271	1
UASP608030	Plain sides	600	800	300	271	1
UASP8010030	Plain sides	800	1000	300	271	1



# Casemet Cubo V wall cabinets

## IP 66, IP 68, IP 69

### Sizes 80 x 80 x 80 - 800 x 600 x 400 mm

- Polyester painted steel: plain sides
- Stainless steel AISI 304: plain sides



## Cubo V wall cabinets overview

- Cubo V-Series enclosures are dust-tight and resistant to water and steam sprayed close by, as well as immersion.
- The enclosures are available in polyester and stainless steel and have a high quality seamless silicone seal.
- All enclosures have smooth sides.
- The enclosures are supplied with welded fastening ears.
- Fasten the lid with screws outside the sealing surface.
- The bottom and folders have welding bolts ready
- IP 69 has been tested and approved.
- High thermal resistance.
- Enhanced vibration resistance due to welded mounting lugs.

## Product packaging contents

- Base of the enclosure
- Cover
- Cover screws
- Mounting plate
- M6 nut and washer for grounding purposes
- Grounding marks



Cubo V series enclosures are dust-tight and can withstand high-pressure water and steam sprayed from close range, as well as immersion.

Watch a video documenting the Cubo V immersion test conducted over three months underwater: <https://youtu.be/wdvCNM8k-bl>.

## Compliance

Steel enclosures:



## Technical information

Degree of protection: IP 66, IP 68, IP 69

## Material

Base/cover: Polyester painted steel, AISI 304

Gasket: Silicone

Mounting plate: Galvanised steel

Door fastening: Screws

## Knockout alternatives

Polyester painted enclosures:

Plain sides

AISI304:

Plain sides

## Standard colour

Polyester painted enclosures:

Grey RAL 7035

## Casemet Cubo V wall cabinets

Casemet Cubo V wall cabinets, plain sides, polyester painted mild steel

Product code	Description	External dimensions (mm)			Package size (pcs)
		Width	Height	Depth	
VFEP080808A	Plain sides	140	135	80	1
VFEP101010A	Plain sides	160	155	100	1
VFEP151510A	Plain sides	210	205	100	1
VFEP151515A	Plain sides	210	205	150	1
VFEP202010A	Plain sides	260	255	100	1
VFEP202015A	Plain sides	260	255	150	1
VFEP302010A	Plain sides	360	255	100	1
VFEP302015A	Plain sides	360	255	150	1
VFEP303020A	Plain sides	360	355	200	1
VFEP304020A	Plain sides	360	455	200	1
VFEP404020A	Plain sides	460	455	200	1
VFEP404030A	Plain sides	460	455	300	1
VFEP405020A	Plain sides	460	555	200	1
VFEP405030A	Plain sides	460	555	300	1
VFEP406020A	Plain sides	460	655	200	1
VFEP406030A	Plain sides	460	655	300	1
VFEP406040A	Plain sides	460	655	400	1
VFEP506020A	Plain sides	560	655	200	1
VFEP506030A	Plain sides	560	655	300	1
VFEP506040A	Plain sides	560	655	400	1
VFEP606020A	Plain sides	660	655	200	1
VFEP606030A	Plain sides	660	655	300	1
VFEP606040A	Plain sides	660	655	400	1
VFEP806020A	Plain sides	860	655	200	1
VFEP806030A	Plain sides	860	655	300	1
VFEP806040A	Plain sides	860	655	400	1



Casemet Cubo V wall cabinets, plain sides, stainless steel AISI304

Product code	Description	External dimensions (mm)			Package size (pcs)
		Width	Height	Depth	
VSSP080808	Plain sides	140	135	80	1
VSSP101010	Plain sides	160	155	100	1
VSSP151510	Plain sides	210	205	100	1
VSSP151515	Plain sides	210	205	150	1
VSSP202010	Plain sides	260	255	100	1
VSSP202015	Plain sides	260	255	150	1
VSSP302010	Plain sides	360	255	100	1
VSSP302015	Plain sides	360	255	150	1
VSSP303020	Plain sides	360	355	200	1
VSSP304020	Plain sides	360	455	200	1
VSSP404020	Plain sides	460	455	200	1
VSSP404030	Plain sides	460	455	300	1
VSSP405020	Plain sides	460	555	200	1
VSSP405030	Plain sides	460	555	300	1
VSSP406020	Plain sides	460	655	200	1
VSSP406030	Plain sides	460	655	300	1
VSSP406040	Plain sides	460	655	400	1
VSSP506020	Plain sides	560	655	200	1
VSSP506030	Plain sides	560	655	300	1
VSSP506040	Plain sides	560	655	400	1
VSSP606020	Plain sides	660	655	200	1
VSSP606030	Plain sides	660	655	300	1
VSSP606040	Plain sides	660	655	400	1
VSSP806020	Plain sides	860	655	200	1
VSSP806030	Plain sides	860	655	300	1
VSSP806040	Plain sides	860	655	400	1



# Casemet Cubo OC outdoor cabinets

## IP 65, two doors IP 55

Sizes 600 x 1000 x 400 – 1800 x 1800 x 600 mm

- Materials: aluminium, stainless steel AISI 304, stainless steel AISI 316L and galvanised steel



### Cubo OC outdoor cabinets in brief

- Casemet Cubo OC is an excellent enclosure solution for protecting electrical and hydraulics in demanding environments. It is designed specifically for rail and road applications.
- The double-door cabinet is available with IP55 and IK10 ratings, in sizes 1200x1000x500 – 1800x1800x600.
- The single-door cabinet is available with IP65 and IK10 ratings, in sizes 600x1000x400 – 1000x1800x600.
- Cubo OC cabinets are available in customised versions.

### Cubo OC cabinets are suitable for demanding outdoor use

When choosing the size of the cabinet, it is good to consider whether you may need to add components to it later. Cubo OC cabinets are available in several different sizes and we can create solutions according to the customer's desired dimensions.



#### Compliance

Cabinets:



#### Technical information

Degree of protection: IP 65, double door IP 55

Impact resistance: IK 10

#### Material

Base/door: Aluminium (3mm), stainless steel AISI 304 (2mm), stainless steel AISI 316L (2mm), galvanised steel (2mm),  
Gasket: Silicone  
Hinges: Stainless steel  
Door installation: Bar lock

# Casemet Cubo OC outdoor cabinets

## Casemet Cubo OC outdoor cabinets, 1-door

Product code	External dimensions (mm)		
	Width	Height	Depth
OCAL/OCSS/OCAS/OCAZ 6010040	600	1000	400
OCAL/OCSS/OCAS/OCAZ 6012040	600	1200	400
OCAL/OCSS/OCAS/OCAZ 6014040	600	1400	400
OCAL/OCSS/OCAS/OCAZ 6016050	600	1600	500
OCAL/OCSS/OCAS/OCAZ 6018050	600	1800	500
OCAL/OCSS/OCAS/OCAZ 8010050	800	1000	500
OCAL/OCSS/OCAS/OCAZ 8012050	800	1200	500
OCAL/OCSS/OCAS/OCAZ 8014050	800	1400	500
OCAL/OCSS/OCAS/OCAZ 8016050	800	1600	500
OCAL/OCSS/OCAS/OCAZ 8018050	800	1800	500
OCAL/OCSS/OCAS/OCAZ 10010050	1000	1000	500
OCAL/OCSS/OCAS/OCAZ 10012050	1000	1200	500
OCAL/OCSS/OCAS/OCAZ 10014050	1000	1400	500
OCAL/OCSS/OCAS/OCAZ 10016060	1000	1600	600
OCAL/OCSS/OCAS/OCAZ 10018060	1000	1800	600
OCAL/OCSS/OCAS/OCAZ 12010050	1200	1000	500
OCAL/OCSS/OCAS/OCAZ 12012060	1200	1200	600
OCAL/OCSS/OCAS/OCAZ 12014060	1200	1400	600

## Casemet Cubo OC outdoor cabinet, 2-doors

Product code	External dimensions (mm)		
	Width	Height	Depth
OCAL/OCSS/OCAS/OCAZ 12010050D	1200	1000	500
OCAL/OCSS/OCAS/OCAZ 12012050D	1200	1200	500
OCAL/OCSS/OCAS/OCAZ 12014050D	1200	1400	500
OCAL/OCSS/OCAS/OCAZ 12016060D	1200	1600	600
OCAL/OCSS/OCAS/OCAZ 12018060D	1200	1800	600
OCAL/OCSS/OCAS/OCAZ 14010060D	1400	1000	600
OCAL/OCSS/OCAS/OCAZ 14012060D	1400	1200	600
OCAL/OCSS/OCAS/OCAZ 14014060D	1400	1400	600
OCAL/OCSS/OCAS/OCAZ 14016060D	1400	1600	600
OCAL/OCSS/OCAS/OCAZ 14018060D	1400	1800	600
OCAL/OCSS/OCAS/OCAZ 16014060D	1600	1400	600
OCAL/OCSS/OCAS/OCAZ 16016060D	1600	1600	600
OCAL/OCSS/OCAS/OCAZ 16018060D	1600	1800	600
OCAL/OCSS/OCAS/OCAZ 18016060D	1800	1600	600
OCAL/OCSS/OCAS/OCAZ 18018060D	1800	1800	600

OCAL = 3 mm aluminium EN AW 5754 H22  
 OCSS = 2 mm stainless steel AISI304  
 OCAS = 2 mm stainless steel teräs AISI316L  
 OCAZ = 2 mm galvanised steel DX51D+AZ150NAE  
 D = two doors

## Other accessories

Product code
Mounting plate
Rain shelter
19 inch rails
Lock
Swing handle
Eyebolts
Door stopper
Chart pocket
Mounting bracket for light
Plinth
Base



Material options include aluminium, stainless steel AISI304, stainless steel AISI316L and galvanised steel. Aluminium is the lightest of the material options and has good corrosion resistance.

# Casemet Cubo EC wall cabinets

*Cubo EC combines high corrosion and vibration resistance with a lightweight construction.*



## IP 66, models with two doors IP 55

Sizes 200 x 300 x 150 – 1400 x 1600 x 400 mm

- Polyester painted mild steel: Plain sides and models with flange openings
- Stainless steel AISI304: Plain sides
- Stainless steel AISI316L: Plain sides
- Aluminum: Plain sides

### Cubo EC wall cabinets: An Overview

- Polyester painted enclosures have flange openings, stainless steel and aluminum enclosures have plain sides
- Available in 33 sizes
- The bottom of the enclosure has welded M8 bolts for the mounting plate and the door has M6 bolts for DIN rail profiles or DIN rails
- M6 bolts on two sides of the bottom for grounding
- The door hinges can be easily changed from right to left
- Polyester painted enclosures have wall mounting holes
- Stainless steel models have pre-drilled drilling marks



Many different accessories are available for Cubo EC enclosures, such as rain shelters. Pictured is a stainless steel rain shelter. ERS2015B.

### Tuotepaketin sisältö

- Enclosure base and door
- Cover plate(s) for flange opening(s), bolts and nuts (polyester painted enclosures)
- Mounting plate with required nuts
- M8 bolt, washers and a nut for earth connection of the mounting plate
- Earth marks
- DIN 3 lock and one DIN 3 key
- Cover plugs for mounting holes (polyester painted enclosures) and hinge holes
- Nut and washers for M6 bolt



The angled bottom of Cubo EC enclosures ensures better sealing surface durability, for example in conditions where high protection against vibration is required.

### Compliance

Steel enclosures



### Technical information

Degree of protection: IP 66, models with two doors IP 55

### Materials

Base/door:	Polyester painted mild steel, Stainless steel AISI304 Stainless steel AISI316L Aluminum EN AW-5754 H22
Gasket:	PUR (polyurethane)
Mounting plate:	Galvanised steel
Locks:	In painted enclosures, zinc die-cast with chrome plating, AISI304 or AISI316L in stainless steel enclosures
Hinges:	Stainless steel

### Knockout alternatives

Polyester-painted enclosures:	Plain sides, flange openings
AISI304:	Plain sides
AISI316L:	Plain sides
Aluminum:	Plain sides

### Standard colour

Polyester-painted enclosures: Grey RAL 7035

# Casemet Cubo EC wall cabinets

Product code	External dimensions (mm)		
	Width	Height	Depth
ECFEP / ECFEF / ECSSP / ECASP / ECALP 203015	200	300	150
ECFEP / ECFEF / ECSSP / ECASP / ECALP 383820	380	380	200
ECFEP / ECFEF / ECSSP / ECASP / ECALP 386020	380	600	200
ECFEP / ECFEF / ECSSP / ECASP / ECALP 386030	380	600	300
ECFEP / ECFEF / ECSSP / ECASP / ECALP 403015	400	300	150
ECFEP / ECFEF / ECSSP / ECASP / ECALP 403020	400	300	200
ECFEP / ECFEF / ECSSP / ECASP / ECALP 404020	400	400	200
ECFEP / ECFEF / ECSSP / ECASP / ECALP 404030	400	400	300
ECFEP / ECFEF / ECSSP / ECASP / ECALP 405020	400	500	200
ECFEP / ECFEF / ECSSP / ECASP / ECALP 406020	400	600	200
ECFEP / ECFEF / ECSSP / ECASP / ECALP 406030	400	600	300
ECFEP / ECFEF / ECSSP / ECASP / ECALP 604020	600	400	200
ECFEP / ECFEF / ECSSP / ECASP / ECALP 604030	600	400	300
ECFEP / ECFEF / ECSSP / ECASP / ECALP 606020	600	600	200
ECFEP / ECFEF / ECSSP / ECASP / ECALP 606030	600	600	300
ECFEP / ECFEF / ECSSP / ECASP 608020	600	800	200
ECFEP / ECFEF / ECSSP / ECASP 608030	600	800	300
ECFEP / ECFEF / ECSSP / ECASP 6010030	600	1000	300
ECFEP / ECFEF / ECSSP / ECASP 6012030	600	1200	300
ECFEP / ECFEF / ECSSP / ECASP 767620	760	760	200
ECFEP / ECFEF / ECSSP / ECASP 767630	760	760	300
ECFEP / ECFEF / ECSSP / ECASP 806030	800	600	300
ECFEP / ECFEF / ECSSP / ECASP 808020	800	800	200
ECFEP / ECFEF / ECSSP / ECASP 808030	800	800	300
ECFEP / ECFEF / ECSSP / ECASP 808030D	800	800	300
ECFEP / ECFEF / ECSSP / ECASP 8010030	800	1000	300
ECFEP / ECFEF / ECSSP / ECASP 8010030D	800	1000	300
ECFEP / ECFEF / ECSSP / ECASP 8012030	800	1200	300
ECFEP / ECFEF / ECSSP / ECASP 1008030	1000	800	300
ECFEP / ECFEF / ECSSP / ECASP 10010030	1000	1000	300
ECFEP / ECFEF / ECSSP / ECASP 10010030D	1000	1000	300
ECFEP / ECFEF / ECSSP / ECASP 10012030	1000	1200	300
ECFEP / ECFEF / ECSSP / ECASP 10012030D	1000	1200	300
ECFEP / ECFEF / ECSSP / ECASP 10012040	1000	1200	400
ECFEP / ECFEF / ECSSP / ECASP 10012040D	1000	1200	400
ECFEP / ECFEF / ECSSP / ECASP 12010030	1200	1000	300
ECFEP / ECFEF / ECSSP / ECASP 12010030D	1200	1000	300
ECFEP / ECFEF / ECSSP / ECASP 12010040	1200	1000	400
ECFEP / ECFEF / ECSSP / ECASP 12010040D	1200	1000	400
ECFEP / ECFEF / ECSSP / ECASP 12012040	1200	1200	400
ECFEP / ECFEF / ECSSP / ECASP 12012040D	1200	1200	400
ECFEP / ECFEF / ECSSP / ECASP 12014040D	1200	1400	400
ECFEP / ECFEF / ECSSP / ECASP 14012030D	1400	1200	300
ECFEP / ECFEF / ECSSP / ECASP 14012040D	1400	1200	400
ECFEP / ECFEF / ECSSP / ECASP 14014040D	1400	1400	400
ECFEP / ECFEF / ECSSP / ECASP 14016040D	1400	1600	400

ECFEP = polyester painted mild steel DC01, plain sides  
 ECFEF = polyester painted mild steel , flange openings  
 ECSSP = stainless steel AISI304, plain sides  
 ECASP = Stainless steel AISI316L, plain sides  
 ECALP = aluminum EN AW-5754 H22, plain sides  
 D = two doors



# GENERAL ENCLOSURE ACCESSORIES

## Pole mounting brackets

Product code	Description	Dimensions (mm)	Package size (pcs)
<b>2-rail set</b>			
PMK15	For a 150 mm enclosure	28 x 35 x 145	1
PMK20	For a 200 mm enclosure	28 x 35 x 195	1
PMK30	For a 300 mm enclosure	28 x 35 x 295	1
PMK40	For a 400 mm enclosure	28 x 35 x 395	1
PMK50	For a 500 mm enclosure	28 x 35 x 495	1
PMK60	For a 600 mm enclosure	28 x 35 x 595	1
<b>Sets with a plate</b>			
PMK1515	For a 150 mm enclosure	41 x 150 x 155	1
PMK2020	For a 200 mm enclosure	41 x 200 x 205	1



PMK2020

PMK20



PMK20



PMK50



PMK2020

## Gas spring and accessories

Product code	Description	Package size (pcs)
VPTS93	Gas spring	1
VPXS3.01	Base side fixing part of the gas spring	1
VPXS3.02	Door-side fixing part of the gas spring	1



VPTS93, Gas spring



VPXS3.01, Base side fixing part of the gas spring



VPXS3.02, Door-side fixing part of the gas spring

## Ventilation valves and breathers

Product code	Description	Dimensions (mm)	Package size (pcs)
VBSS10S	Breather, IP 68, AISI 304, 16l/h	ø19 x 21	1
VBSS10H	Breather, IP 68, AISI 304, 120l/h	ø19 x 21	1



Breather, IP 68, AISI 304 16 l/h, VBSS10S

## Other supplies

Product code	Description	Dimensions (mm)	Package size (pcs)
KY3	Triangular wrench	20 x 50 x 22	10
KY3.10	Triangular wrench, lockable, 11 mm	20 x 50 x 22	10
ST80/U	Triangular key, 11 mm	34 x 52 x 16	10
VPTL69	Triangle quarter-turn latch, 10 mm	ø 28 x 31	10
VPTL67	Slotted quarter-turn latch	ø 28 x 31	1
VPTL30	Triangle quarter-turn latch, 7 mm	ø 28 x 31	1



Triangular wrench, KY3



Triangular wrench, lockable, KY3.10



Triangular key, ST80/U



Triangle quarter-turn latch 10 mm, VPTL69



Slotted quarter-turn latch, VPTL67

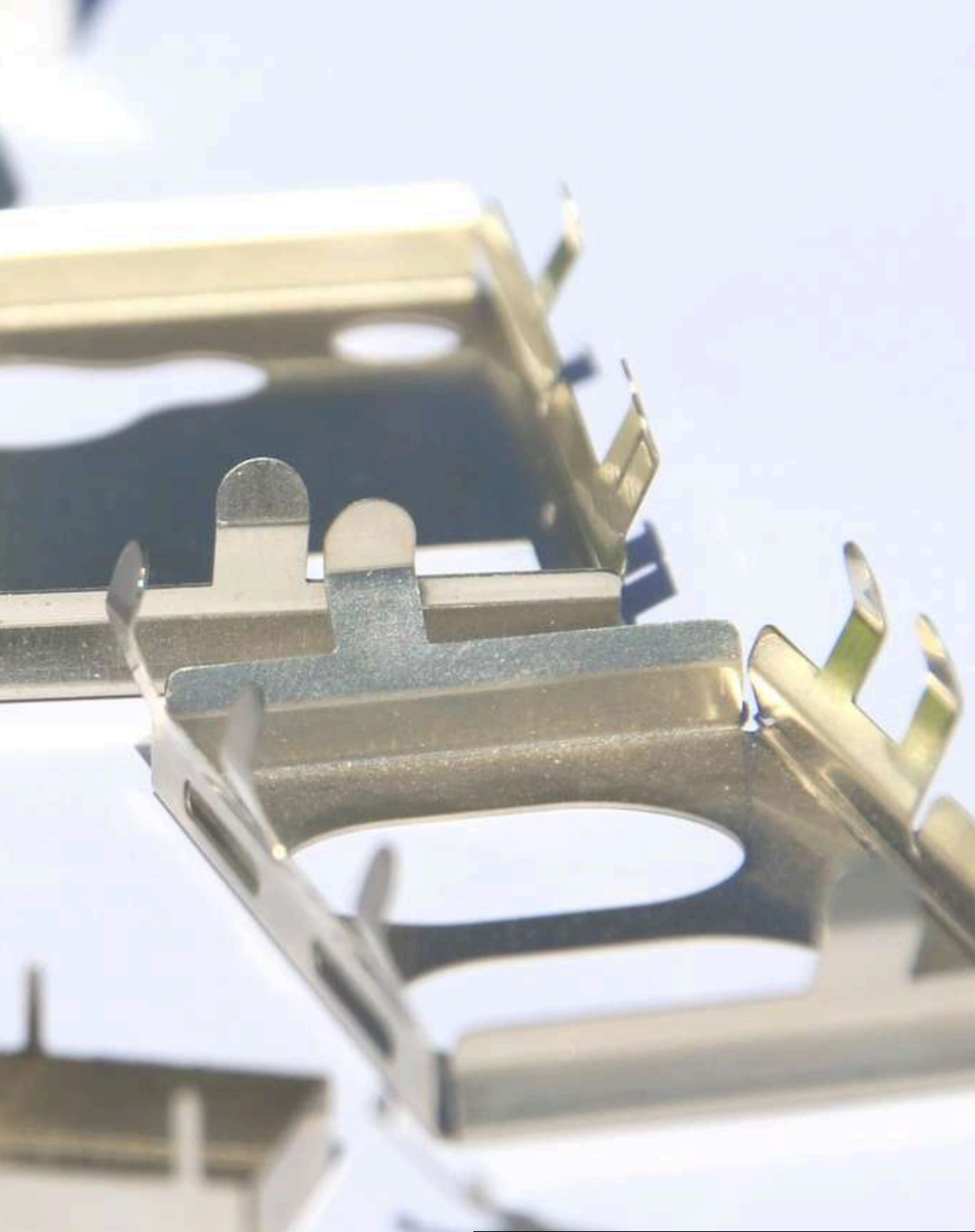


Triangle quarter-turn latch, 7 mm, VPTL30

## Legal notice

The information in this brochure is to the best of our knowledge and belief correct and reliable. However, we are not responsible for the use, accuracy and completeness of the information. The purchaser of the product is responsible for evaluating independently the suitability of the product for the intended application. Our responsibilities for the products are set forth in our general terms and conditions of sale, currently NL 09. We are also under no circumstances responsible for its distributors or for any misuse, damage due to incorrect installation or damage due to ignored national safety or other provisions. We reserve the right to make changes in the specifications, materials and production methods without prior notice.

Copyright Casemet Oy 2026



**CASEMET**

Strong as steel.