

# Casemet Cubo EC wall cabinets

*Cubo EC combines high corrosion and vibration resistance with a lightweight construction.*



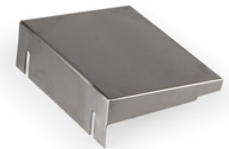
## IP 66, models with two doors IP 55

Sizes 200 x 300 x 150 – 1400 x 1600 x 400 mm

- Polyester painted mild steel: Plain sides and models with flange openings
- Stainless steel AISI304: Plain sides
- Stainless steel AISI316L: Plain sides
- Aluminum: Plain sides

### Cubo EC wall cabinets: An Overview

- Polyester painted enclosures have flange openings, stainless steel and aluminum enclosures have plain sides
- Available in 33 sizes
- The bottom of the enclosure has welded M8 bolts for the mounting plate and the door has M6 bolts for DIN rail profiles or DIN rails
- M6 bolts on two sides of the bottom for grounding
- The door hinges can be easily changed from right to left
- Polyester painted enclosures have wall mounting holes
- Stainless steel models have pre-drilled drilling marks



Many different accessories are available for Cubo EC enclosures, such as rain shelters. Pictured is a stainless steel rain shelter. ERS2015B.

### Tuotepaketin sisältö

- Enclosure base and door
- Cover plate(s) for flange opening(s), bolts and nuts (polyester painted enclosures)
- Mounting plate with required nuts
- M8 bolt, washers and a nut for earth connection of the mounting plate
- Earth marks
- DIN 3 lock and one DIN 3 key
- Cover plugs for mounting holes (polyester painted enclosures) and hinge holes
- Nut and washers for M6 bolt



The angled bottom of Cubo EC enclosures ensures better sealing surface durability, for example in conditions where high protection against vibration is required.

### Compliance

Steel enclosures



### Technical information

Degree of protection: IP 66, models with two doors IP 55

### Materials

Base/door:	Polyester painted mild steel, Stainless steel AISI304 Stainless steel AISI316L Aluminum EN AW-5754 H22
Gasket:	PUR (polyurethane)
Mounting plate:	Galvanised steel
Locks:	n painted enclosures, zinc die-cast with chrome plating, AISI304 or AISI316L in stainless steel enclosures
Hinges:	Stainless steel

### Knockout alternatives

Polyester-painted enclosures:	Plain sides, flange openings
AISI304:	Plain sides
AISI316L:	Plain sides
Aluminum:	Plain sides

### Standard colour

Polyester-painted enclosures: Grey RAL 7035

# Casemet Cubo EC wall cabinets

Product code	External dimensions (mm)		
	Width	Height	Depth
ECFEP / ECFEF / ECSSP / ECASP / ECALP 203015	200	300	150
ECFEP / ECFEF / ECSSP / ECASP / ECALP 383820	380	380	200
ECFEP / ECFEF / ECSSP / ECASP / ECALP 386020	380	600	200
ECFEP / ECFEF / ECSSP / ECASP / ECALP 386030	380	600	300
ECFEP / ECFEF / ECSSP / ECASP / ECALP 403015	400	300	150
ECFEP / ECFEF / ECSSP / ECASP / ECALP 403020	400	300	200
ECFEP / ECFEF / ECSSP / ECASP / ECALP 404020	400	400	200
ECFEP / ECFEF / ECSSP / ECASP / ECALP 404030	400	400	300
ECFEP / ECFEF / ECSSP / ECASP / ECALP 405020	400	500	200
ECFEP / ECFEF / ECSSP / ECASP / ECALP 406020	400	600	200
ECFEP / ECFEF / ECSSP / ECASP / ECALP 406030	400	600	300
ECFEP / ECFEF / ECSSP / ECASP / ECALP 604020	600	400	200
ECFEP / ECFEF / ECSSP / ECASP / ECALP 604030	600	400	300
ECFEP / ECFEF / ECSSP / ECASP / ECALP 606020	600	600	200
ECFEP / ECFEF / ECSSP / ECASP / ECALP 606030	600	600	300
ECFEP / ECFEF / ECSSP / ECASP 608020	600	800	200
ECFEP / ECFEF / ECSSP / ECASP 608030	600	800	300
ECFEP / ECFEF / ECSSP / ECASP 6010030	600	1000	300
ECFEP / ECFEF / ECSSP / ECASP 6012030	600	1200	300
ECFEP / ECFEF / ECSSP / ECASP 767620	760	760	200
ECFEP / ECFEF / ECSSP / ECASP 767630	760	760	300
ECFEP / ECFEF / ECSSP / ECASP 806030	800	600	300
ECFEP / ECFEF / ECSSP / ECASP 808020	800	800	200
ECFEP / ECFEF / ECSSP / ECASP 808030	800	800	300
ECFEP / ECFEF / ECSSP / ECASP 808030D	800	800	300
ECFEP / ECFEF / ECSSP / ECASP 8010030	800	1000	300
ECFEP / ECFEF / ECSSP / ECASP 8010030D	800	1000	300
ECFEP / ECFEF / ECSSP / ECASP 8012030	800	1200	300
ECFEP / ECFEF / ECSSP / ECASP 1008030	1000	800	300
ECFEP / ECFEF / ECSSP / ECASP 10010030	1000	1000	300
ECFEP / ECFEF / ECSSP / ECASP 10010030D	1000	1000	300
ECFEP / ECFEF / ECSSP / ECASP 10012030	1000	1200	300
ECFEP / ECFEF / ECSSP / ECASP 10012030D	1000	1200	300
ECFEP / ECFEF / ECSSP / ECASP 10012040	1000	1200	400
ECFEP / ECFEF / ECSSP / ECASP 10012040D	1000	1200	400
ECFEP / ECFEF / ECSSP / ECASP 12010030	1200	1000	300
ECFEP / ECFEF / ECSSP / ECASP 12010030D	1200	1000	300
ECFEP / ECFEF / ECSSP / ECASP 12010040	1200	1000	400
ECFEP / ECFEF / ECSSP / ECASP 12010040D	1200	1000	400
ECFEP / ECFEF / ECSSP / ECASP 12012040	1200	1200	400
ECFEP / ECFEF / ECSSP / ECASP 12012040D	1200	1200	400
ECFEP / ECFEF / ECSSP / ECASP 12014040D	1200	1400	400
ECFEP / ECFEF / ECSSP / ECASP 14012030D	1400	1200	300
ECFEP / ECFEF / ECSSP / ECASP 14012040D	1400	1200	400
ECFEP / ECFEF / ECSSP / ECASP 14014040D	1400	1400	400
ECFEP / ECFEF / ECSSP / ECASP 14016040D	1400	1600	400

ECFEP = polyester painted mild steel DC01, plain sides  
 ECFEF = polyester painted mild steel , flange openings  
 ECSSP = stainless steel AISI304, plain sides  
 ECASP = Stainless steel AISI316L, plain sides  
 ECALP = aluminum EN AW-5754 H22, plain sides  
 D = two doors

